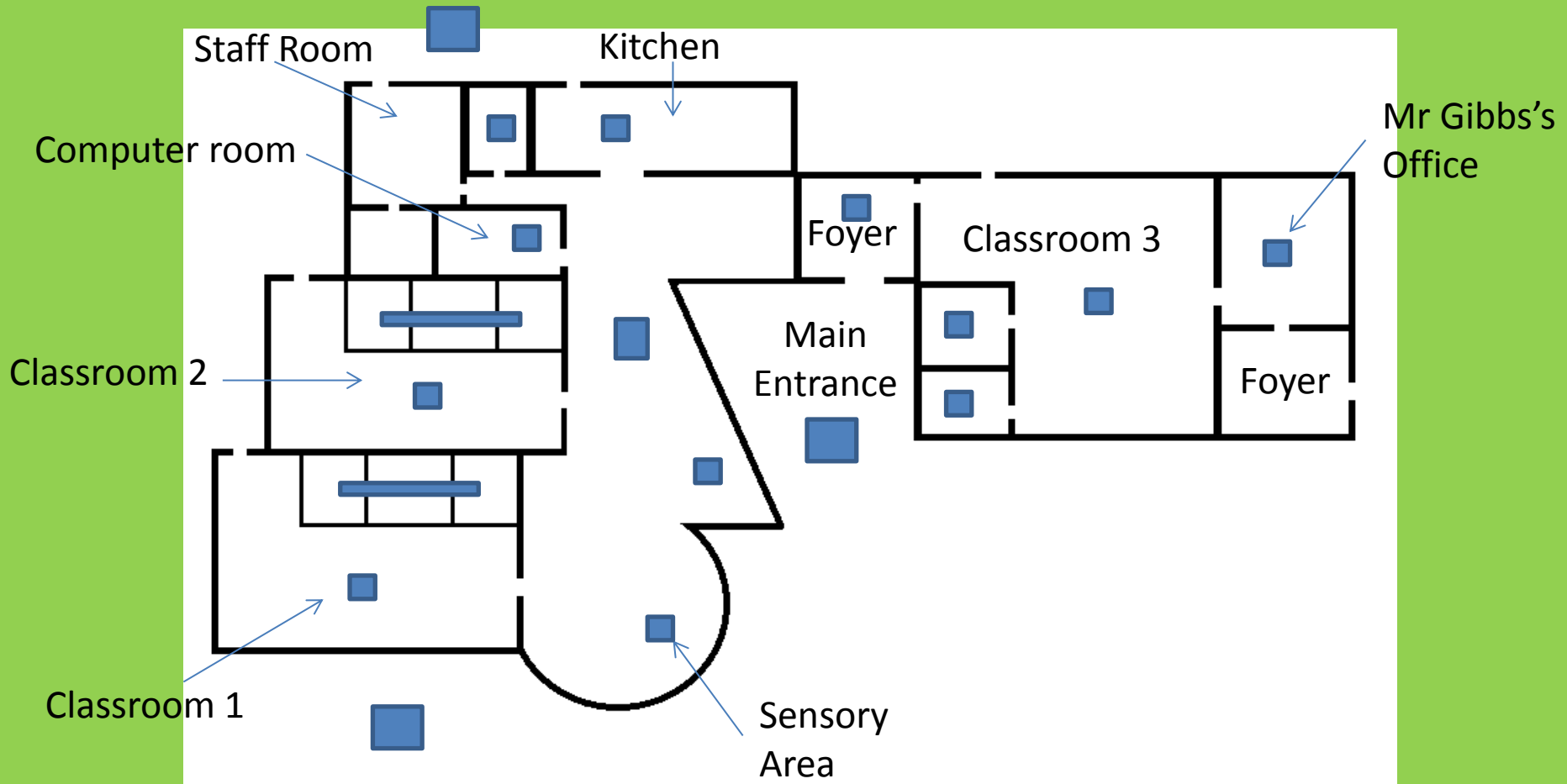


The Nightingale ASC Centre



The aim of this guide is to help you familiarise yourself with the ASC Centre.

Map



Click on the blue squares to see photographs of each area.

The Building



[Back to map](#)

The Main Entrance



[Back to map](#)

The Foyer



[Back to map](#)

Classroom 1



[Back to map](#)

Classroom 1 – toilets and quiet space



[Back to map](#)

Classroom 2



[Back to map](#)

Classroom 2 – quiet space and toilets



[Back to map](#)

Sensory Area



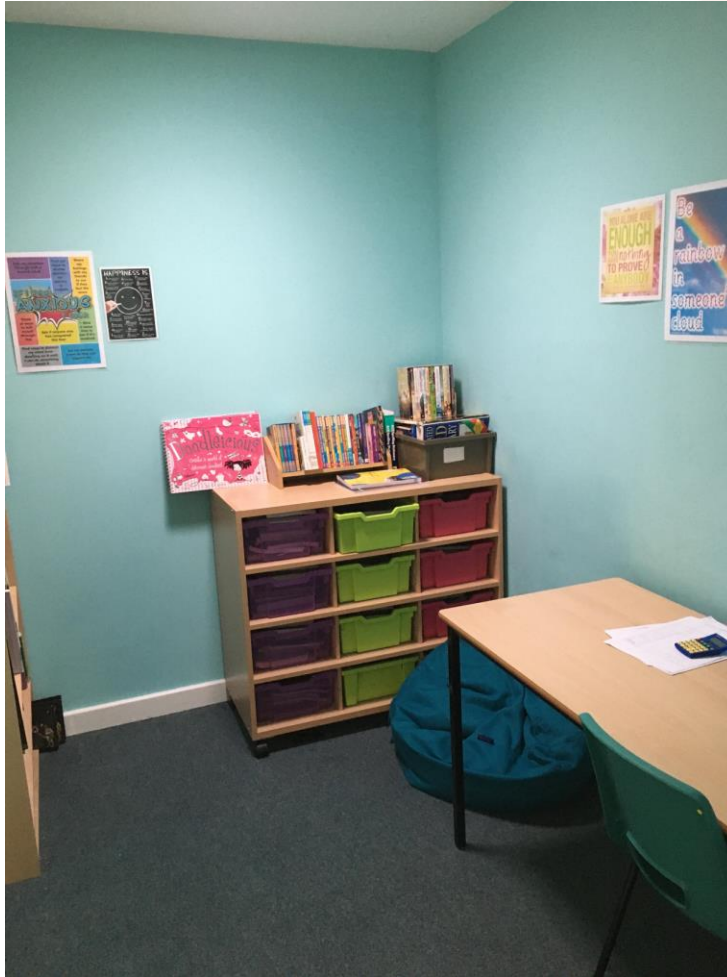
[Back to map](#)

The Round Table



[Back to map](#)

Reading room



This is where some students choose to work quietly.

Sometimes students sit here when they need time to themselves.

[Back to map](#)

Kitchen



- This is where we teaching cooking as part of life skills lessons.
- Some students eat here at break and lunch time.

[Back to map](#)

Computer Room



[Back to map](#)

Classroom 3



[Back to map](#)

Classroom 3 – quiet room



This is where some students choose to work quietly.

Sometimes students sit here when they need time to themselves.

[Back to map](#)

Classroom 3 - toilets



[Back to map](#)

Mr Gibbs's Office



[Back to map](#)

The Main Area



[Back to map](#)

Our Outside Spaces



We have space outside for games and gardening.

[Back to map](#)