

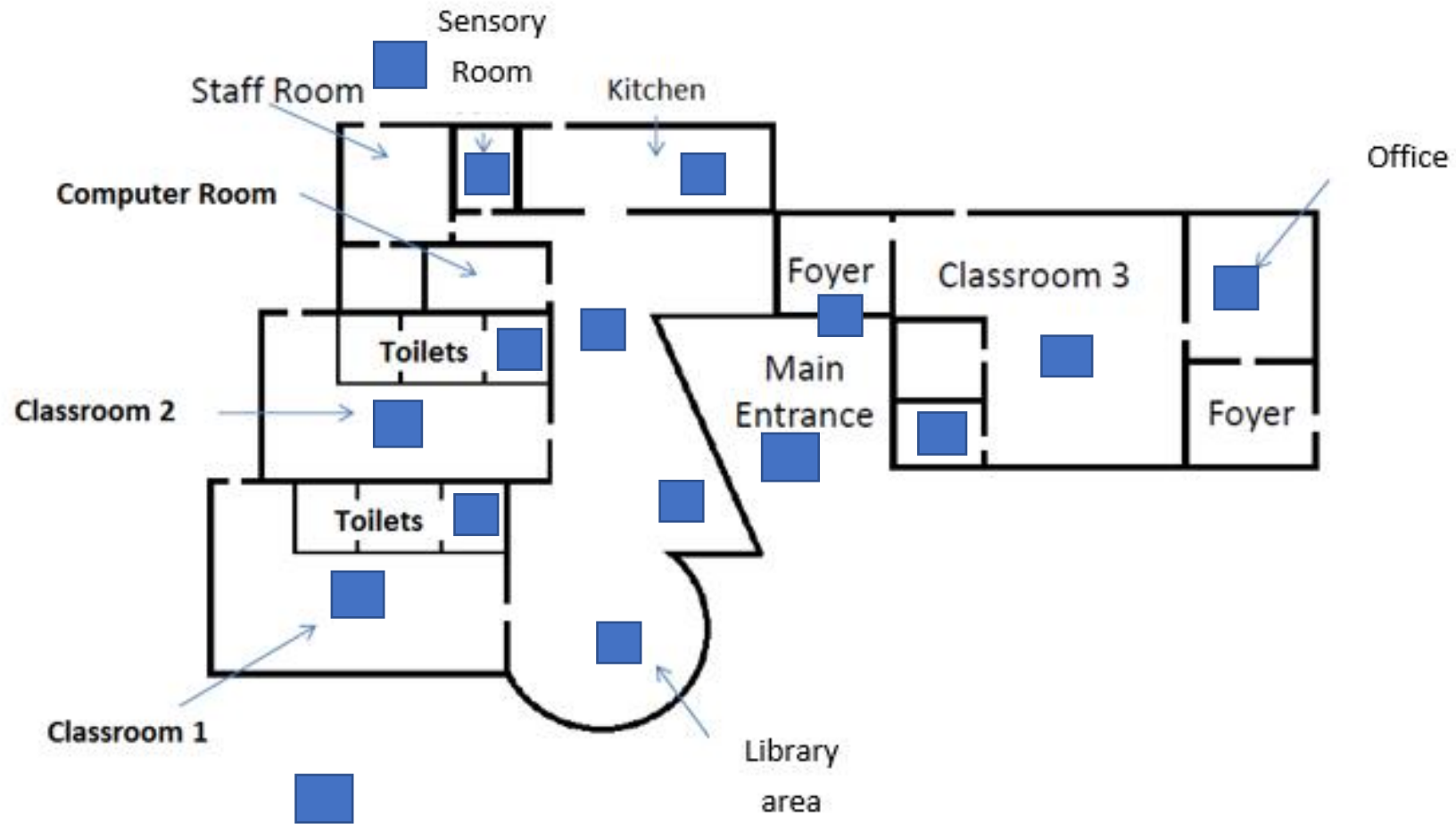
The Nightingale ASC Centre



The aim of this guide is to help you familiarise yourself with the ASC Centre.

Motivated Respectful Successful

Map



Click on the blue squares to see photographs of each area.

Motivated Respectful Successful

The Building



[Back to map](#)

Motivated Respectful Successful

The Main Entrance



The Foyer



Motivated Respectful Successful

Classroom 1



[Back to map](#)

Motivated Respectful Successful

Classroom 1 – toilets and quiet space



Classroom 2



[Back to map](#)

Motivated Respectful Successful

Classroom 2 – toilets and quiet space



Library area



Motivated Respectful Successful

The Round Table



[Back to map](#)

Sensory Room



Kitchen



Classroom 3



[Back to map](#)

Motivated Respectful Successful

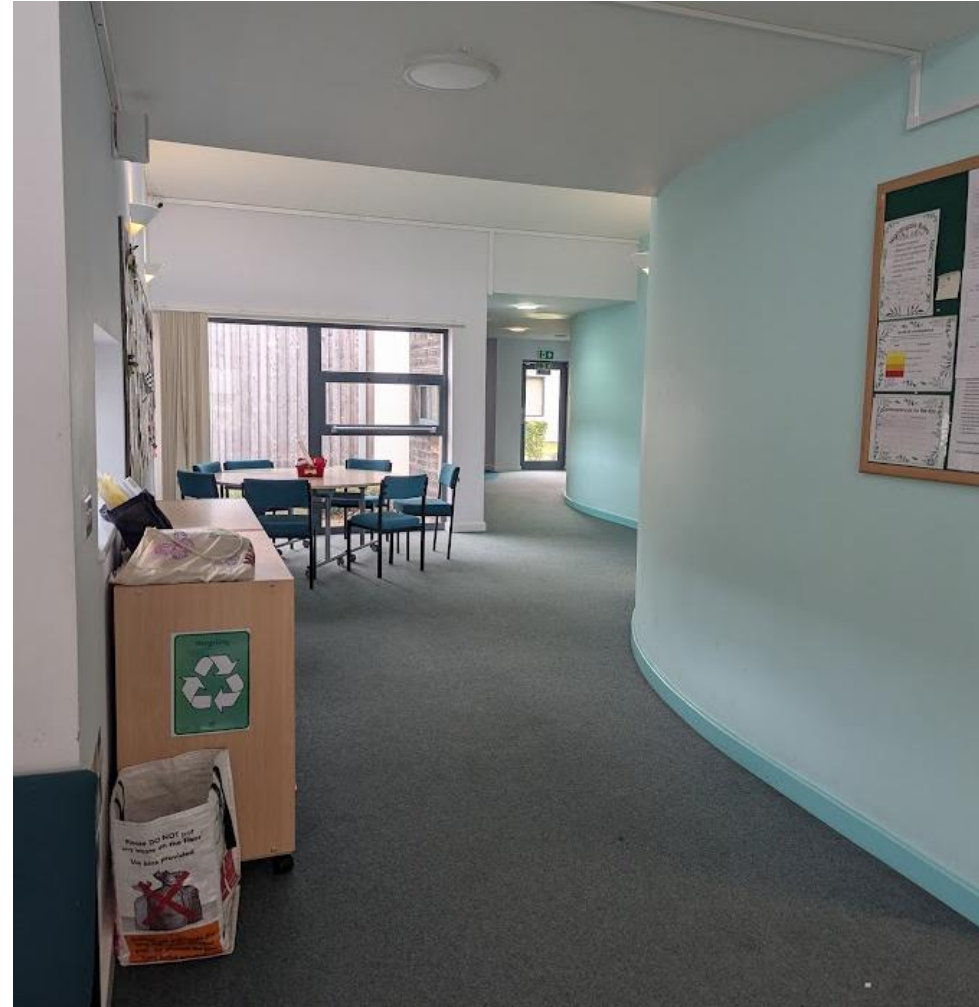
Classroom 3 – toilets and quiet room



Office



The Main Area



Our Outside Spaces



[Back to map](#)