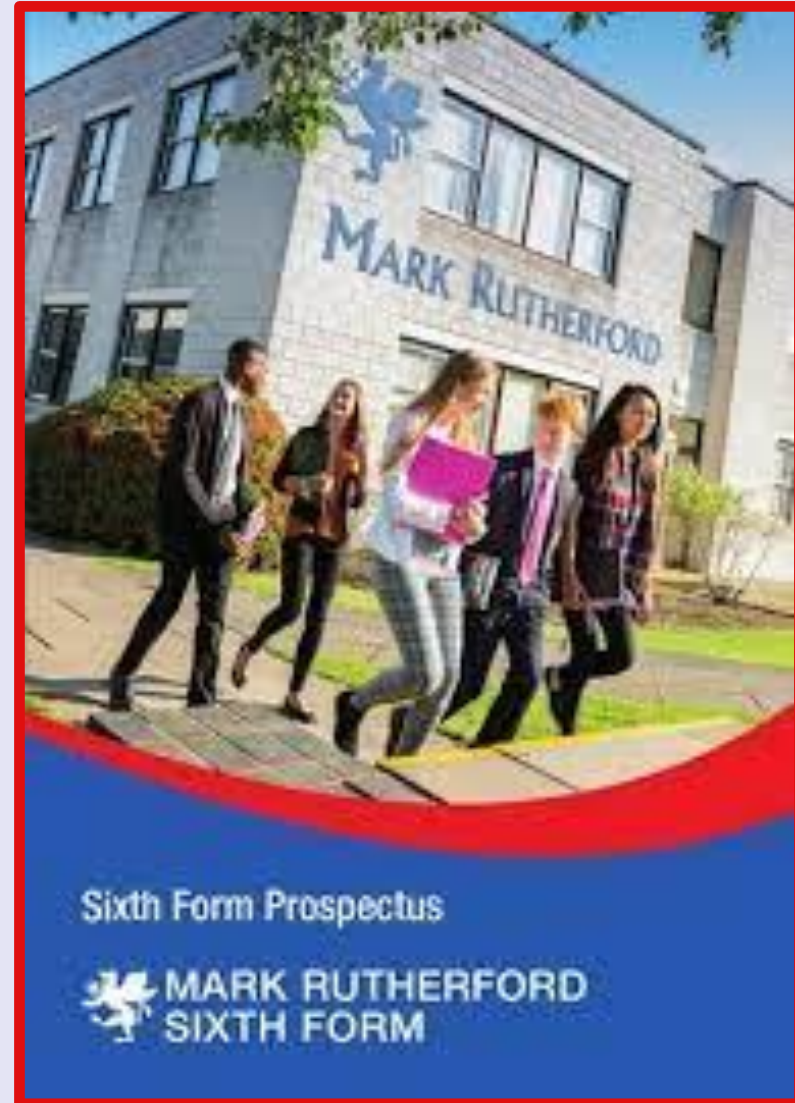




Welcome to the Sixth Form @ Mark Rutherford School

Information Evening
13th November 2025



The Sixth Form Team



Ms Vallance
Director of Sixth Form



Mr Nicholls
Head of Sixth Form



Currently recruiting!
Assistant Head of SF



YOU

Why choose the Sixth Form @ MRS?



Students in the sixth form follow a broad and well-delivered curriculum. Teachers have strong subject knowledge. They match work to their needs well, ensuring that students are provided with a challenging and engaging curriculum. Consequently, students achieve well and are ready for their next steps.

Exam results Summer 2025

A Level
Average grade C
Value added +0.06

BTEC
Average grade Distinction-
Value added +0.34

Overall Value added +0.15

Second highest performance in the Borough, where results have been shared



Destinations 2025

72% of students took up University places, with 30% attending Russell Group or Sutton 30 Universities (including Oxbridge)
10% - Courses at other providers (eg Stella Mann)
8% - Apprenticeship (incl Degree)
8% - Employment
2% - Gap year

Why choose the Sixth Form @ MRS?



An exciting range of academic and vocational subjects

Pathway one

**Academic
programme**

Choose 3 (or
occasionally 4)
Academic A Level
subjects

Study a combination of academic
subjects where assessment is
predominantly by examination

Pathway two

**Vocational
programme**

Choose 3 (or occasionally 4)
Vocational BTEC/AAQ/CNAT
subjects – these may be single,
double or triple courses

Study one or more career focused
qualifications where assessment is
predominantly coursework – with
some examination

Pathway three

**Mixed
programme**

Choose 3 subjects (or
4!) – mix of Academic
and Vocational subjects

Creates a broader combination of
qualifications, skills and
assessments

Why choose the Sixth Form @ MRS?



An exciting range of academic and vocational subjects

High quality teaching, learning and outcomes

Teachers who are specialists in their subject area

Specialist Sixth Form facilities

Privileges such as late start, early finish, leaving the site at lunch time

A provider where student voice is valued

Regular sessions with a Tutor to support academic and personal growth

Timetabled Directed Study periods

An 'office appropriate' dress-code

Staff who are invested in students' progress

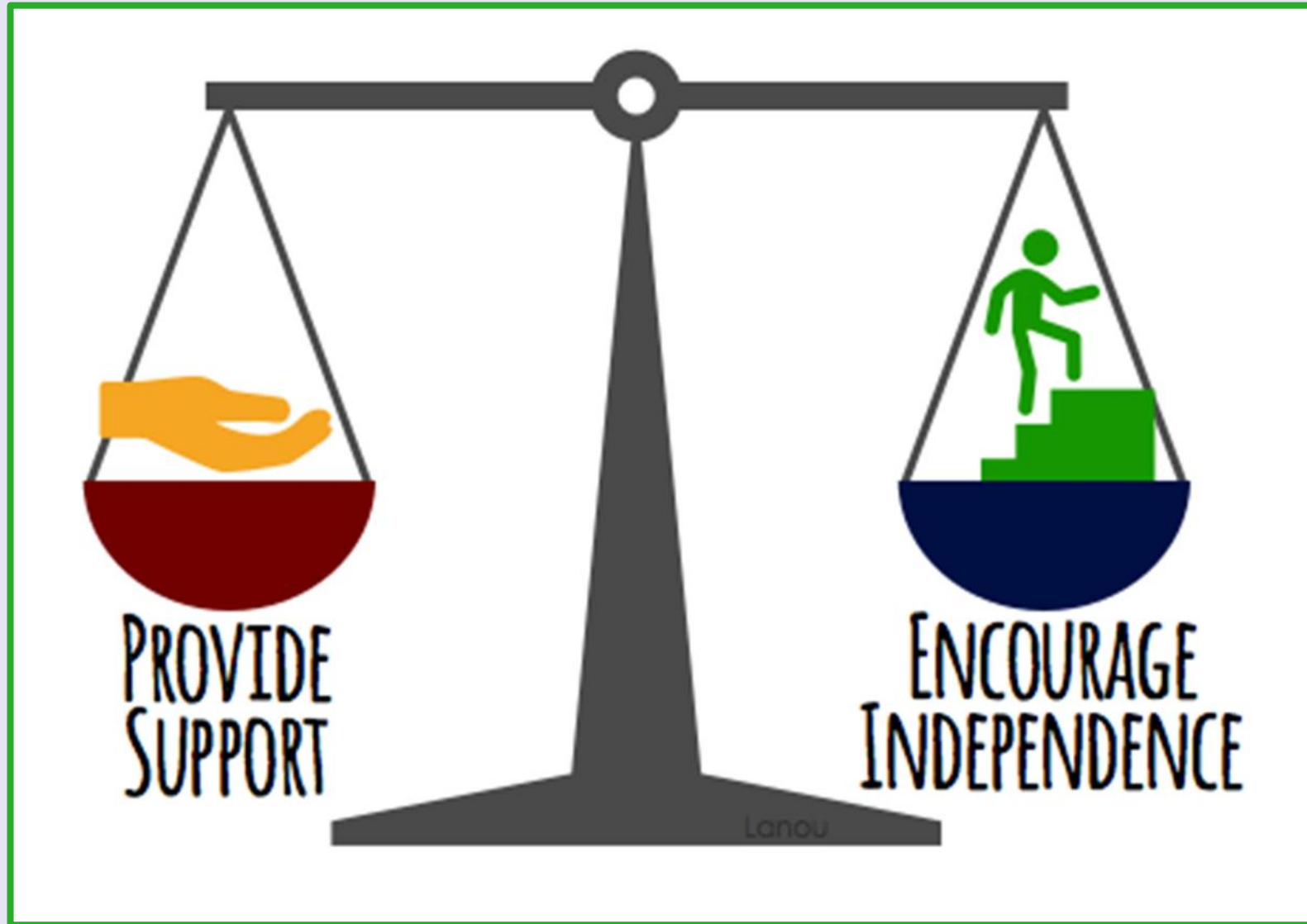
Leadership and super-curricular opportunities

Expert Pastoral care and support

Unrivalled support with UCAS applications

Bespoke Careers advice and workshops

Why choose the Sixth Form @ MRS?



Why choose the Sixth Form @ MRS?



Familiarity in a time of transition

Smooth transition and warm welcome for external students

Independent learning areas, wireless internet access, BYOD

Involvement in higher education and industry

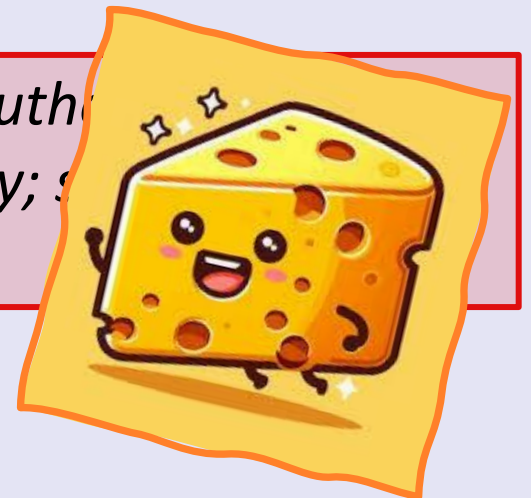
Work experience opportunities

Large number of extra-curricular clubs and activities

Dedicated social and recreational areas

A strong focus on caring for and working with each individual student to maximise success, progression and to ensure preparation for life in higher education and the workplace

*The Sixth Form at Mark Ruth's is
Big enough to offer variety; small enough to offer
care*



English Language

English Literature

Media Studies

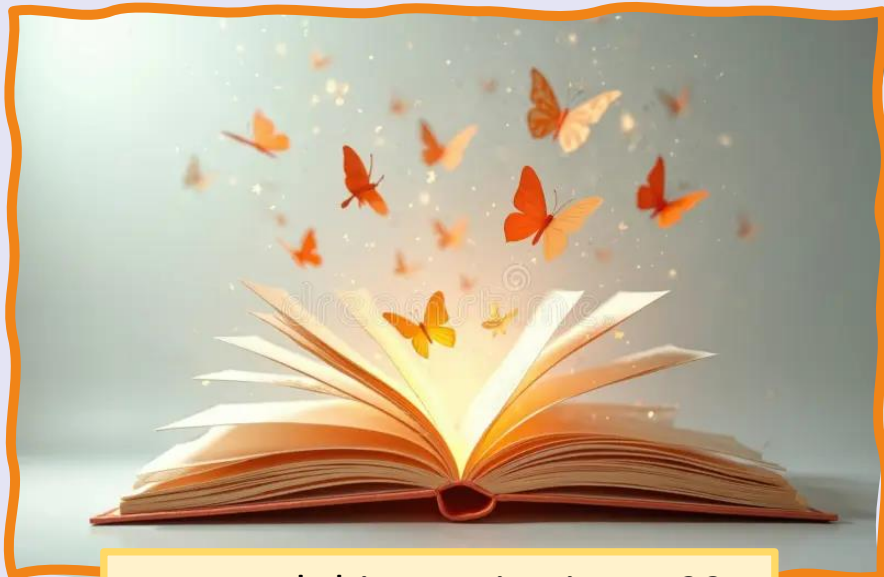


LANGUAGE ARTS



French

Spanish



Located this evening in M122



Located this evening in M119

History

Geography

Law

Criminology



Located this evening in M123

Located this evening in M120

Business Studies



Psychology

Sociology

Health & Social Care

Located this evening in M121



Art and Design

Photography

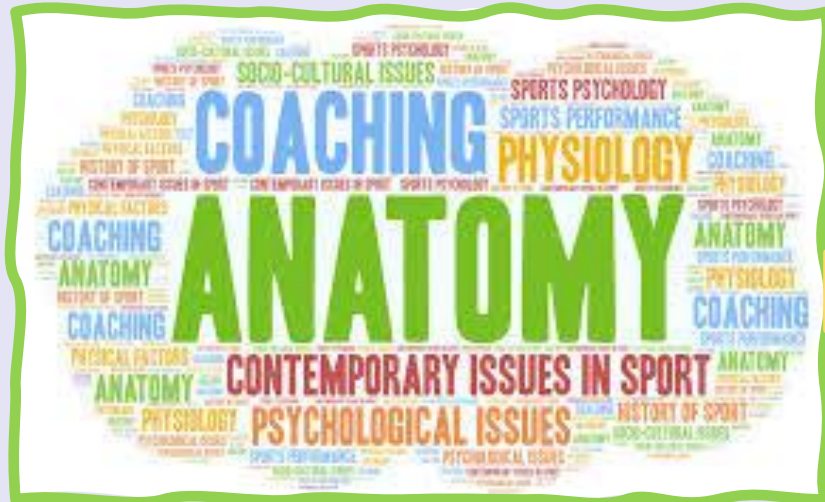
Located this evening in the Foyer



PE

Sports Studies

Located this evening in M117



Dance

Drama

Music

Performing Arts

Music - Performance

Located this evening in the Sixth Form Common Room



Please note that some of the subjects offered may be subject to change based on the number of students applying from the applications received.

Sixth Form timetable



- The majority of students will study **3 subjects** in the Sixth Form
- A small number may decide to follow **4 courses**
- You will have **9 hours of lessons per subject**
- You will have **4 hours of Directed Study per subject** on your timetable
- **PDA and Electives**
- Excellent, age-appropriate **PSHE** curriculum
- Fortnightly **Speakers for Schools** session

Option blocks

In order to offer as wide a range of subject combinations as possible, and to allow us to respond to demand, we **are not** asking you to select from **set 'option blocks'** this year.

The timetable will be formed around students' choices – there will need to be option blocks created from these in order to run the timetable but we aim to satisfy as many combinations as possible.

A reserve choice is important, in the event that we cannot timetable your selection.

Sixth Form timetable



Electives

Ready to Lead (R2L)
Brilliant Club Scholars Programme
STEM Scholarships
Smarties
Raising the Bar
Duke of Edinburgh
Sports
Academic
Year
Community, volunteering
Core Maths
English/Maths re-takes

**New!
Starting
September
2026!**

Co-Curricular and PD

University visits
UCAS Discovery events
Apprenticeship events
Work experience
Careers discovery days
Study skills
Workshops
PDA
Student leadership... and
many more

Entry criteria and Applications



Entry Criteria

- Our preferred entry requirement is **5 GCSEs at Grade 4** or above, including English and Maths
- Subject-specific entry criteria is listed in our online Prospectus
- Detailed subject information can be found in our online Prospectus

Applications

- Follow the link for the **Applicaa** platform, on the Sixth Form website
- The Sixth Form team will send an offer on receipt of application
- ***Application deadline – end of January***
- Informal interviews will take place in the Spring term
- Welcome Day – July 2026
- Accept offer on results day!
- Enrolment and Induction – September 2026



Mark Rutherford
School

ENTER

Sixth Form
at Mark Rutherford School

HOME → HOME → SIXTH FORM → PROSPECTIVE STUDENTS → APPLICATION PROCESS

Application Process

All applications are received electronically. Please click [here](#) if you wish to make an application for the next academic year.

In the months leading up to the application deadline, students will need to make a thoughtful decision about the [subjects](#) they wish to study at Key Stage 5. These courses should be considered and aligned with any career aspirations that a student wishes to follow.

An important part of the application process is our [Sixth Form opening evening](#). This is a great opportunity to meet our excellent subject staff and learn more about the content of the courses, and what would be expected of prospective Level 3 students. If you wish to arrange a tour during the school day, please contact-

Reception Telephone: 01234 290200

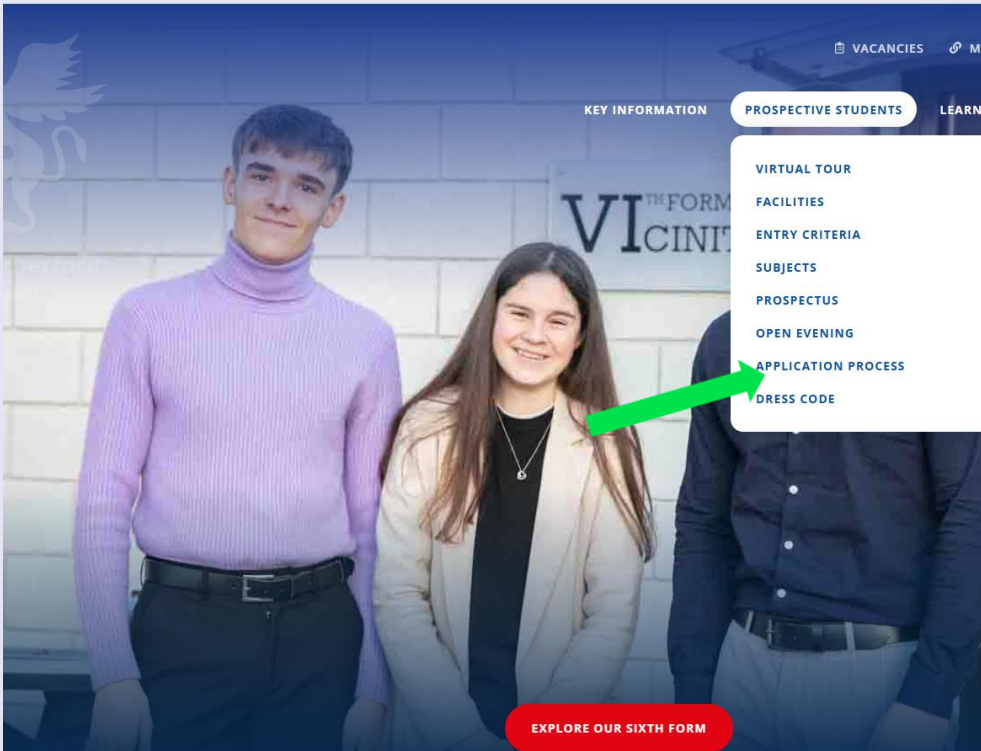
Reception Opening Hours: Monday to Thursday 8am until 4.30pm and Fridays 8am until 4.00pm (term time only)

Any student wishing to apply to Mark Rutherford School Sixth Form will need to complete an **application form**, using the platform [Applicaa](#). Both internal and external students will complete the [Applicaa](#) form.

Once we receive your completed application, the Sixth Form [Admissions Officer](#) will contact you with an offer for a place in the Sixth Form, based on you meeting the specific subject entry criteria.

The application deadline is the end of January. All applicants will be informally interviewed by a senior member of staff – the interviews take place during the Spring term of Year 11. This is a key part of the application process as it is an opportunity to discuss your subject choices and future plans. It is important that we ensure you have made the right choices for you.

The final stage of the application process is the **transition day** in July (after the GCSE exams). On the transition day, students will receive a timetable according to their subject choices and will experience our sixth form for the day, to help them to prepare for a positive start in Year 12 in September.



Open Evening Powerpoint (November

20
25

PDF File





Course	Institution
Biomedical Science	King's College London, University of London
Business and Management (various)	University of Reading / Univ. of East Anglia
Composition (Film / Theatre)	University of West London
Computer Science BSc (various inc. study abroad / work placement)	University of Bath / Hull
Criminal Investigation / Criminology	Canterbury University / University of Leicester
English Language and Linguistics	University of Birmingham
Fashion Communication & Industry Practice	Conde Nast College of Fashion & Design
Fine Art Mixed Media	University of Westminster, London



Course	Institution
Forensic Science	Bournemouth University
Geography / Geography & International Relations	University of Sussex / University of Plymouth
Law (various inc. Human Rights)	London School of Economics / Manchester / Birmingham
Maths	University of Warwick
Midwifery	University of Northampton
Music Production & Sound Engineering / Performance & Recording	Point Blank Music School / University of West London
Nursing (Child)	Anglia Ruskin University



Course	Institution
Politics and International Relations	De Montfort University
Primary Education	Sheffield Hallam University / University of Bedfordshire
Software Engineering	University of Leicester
Sport and Exercise Therapy	Coventry University
Sports Business Management	University of Lincoln
Sports Journalism	University of Lincoln
Wildlife Ecology and Conservation	University Centre Sparsholt
Zoology (with sandwich placement)	University of Cumbria

This evening...



Please make the most of the opportunity you have this evening, to talk to teachers and students about the Sixth Form, and about the courses that are on offer. You might want to ask...

- How are the courses taught?
- What content will I learn on this course?
- How is the course examined, both throughout my study and at the end of the course?
- Does the course suit my strengths?
- Am I open to learning new things?
- How might subjects support my future plans?

Thank you for coming to our event!



We are proud of our Sixth Form and hope you enjoy talking to our knowledgeable students and staff

- The online application is now open – please follow the Applicaa link on our website
- If you have any other questions after this evening, please refer to the information on our website, or email sixth.form@mrus.co.uk

The image is a screenshot of a website page for Mark Rutherford School. At the top left, there is a blue griffin logo. To its right, the text reads "SIXTH FORM AT MARK RUTHERFORD SCHOOL". Below this, the main heading is "NEW SIXTH FORM APPLICATION". Underneath the heading, there is a paragraph of text: "Please click below to start a new Sixth Form Application for the Academic Year 2026/2027". At the bottom of this text block, there is a blue button with the text "Start New Sixth Form Application". The background of the page is a photograph of a school building with a large tree in the foreground and a street lamp.

**We look forward to working
with you through the
application process, and in
September 2026 when you
start Year 12!**